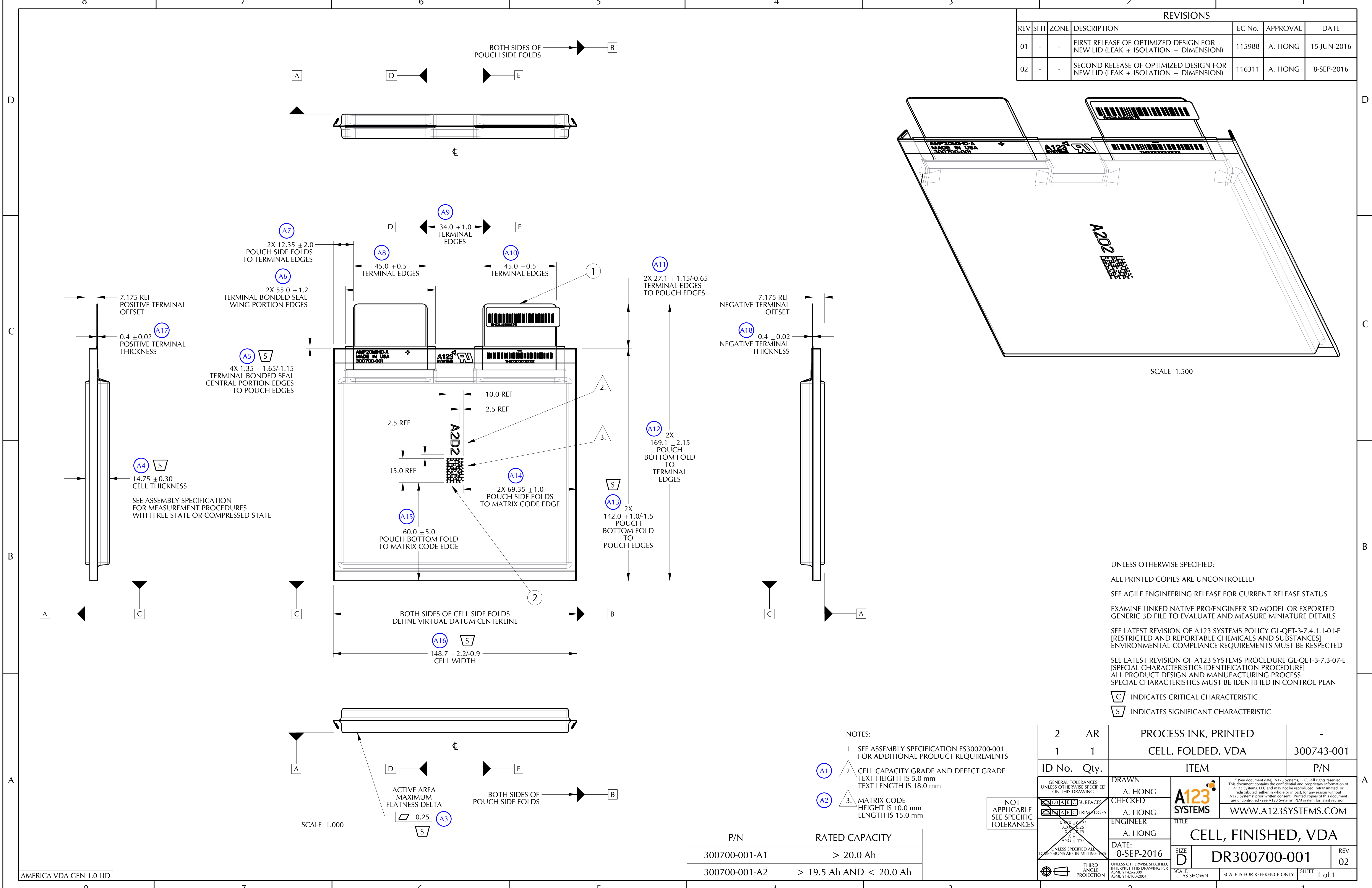


| REVISIONS |     |      |   |        |          |             |
|-----------|-----|------|---|--------|----------|-------------|
| REV       | SHT | ZONE | DESCRIPTION   | EC No. | APPROVAL | DATE        |
| 01        | -   | -    | FIRST RELEASE OF OPTIMIZED DESIGN FOR NEW LID (LEAK + ISOLATION + DIMENSION)  | 115988 | A. HONG  | 15-JUN-2016 |
| 02        | -   | -    | SECOND RELEASE OF OPTIMIZED DESIGN FOR NEW LID (LEAK + ISOLATION + DIMENSION) | 116311 | A. HONG  | 8-SEP-2016  |



UNLESS OTHERWISE SPECIFIED:  
 ALL PRINTED COPIES ARE UNCONTROLLED  
 SEE AGILE ENGINEERING RELEASE FOR CURRENT RELEASE STATUS  
 EXAMINE LINKED NATIVE PRO/ENGINEER 3D MODEL OR EXPORTED GENERIC 3D FILE TO EVALUATE AND MEASURE MINIATURE DETAILS  
 SEE LATEST REVISION OF A123 SYSTEMS POLICY GL-QET-3-7.4.1.1-01-E [RESTRICTED AND REPORTABLE CHEMICALS AND SUBSTANCES] ENVIRONMENTAL COMPLIANCE REQUIREMENTS MUST BE RESPECTED  
 SEE LATEST REVISION OF A123 SYSTEMS PROCEDURE GL-QET-3-7.3-07-E [SPECIAL CHARACTERISTICS IDENTIFICATION PROCEDURE] ALL PRODUCT DESIGN AND MANUFACTURING PROCESS SPECIAL CHARACTERISTICS MUST BE IDENTIFIED IN CONTROL PLAN

C INDICATES CRITICAL CHARACTERISTIC  
 S INDICATES SIGNIFICANT CHARACTERISTIC

- NOTES:
- 1. SEE ASSEMBLY SPECIFICATION FS300700-001 FOR ADDITIONAL PRODUCT REQUIREMENTS (A1)
  - 2. CELL CAPACITY GRADE AND DEFECT GRADE TEXT HEIGHT IS 5.0 mm TEXT LENGTH IS 18.0 mm (A2)
  - 3. MATRIX CODE HEIGHT IS 10.0 mm LENGTH IS 15.0 mm (A3)

| 2   | AR   | PROCESS INK, PRINTED | -          |
|---|------|----------------------|------------|
| 1   | 1    | CELL, FOLDED, VDA    | 300743-001 |
| ID No.  | Qty. | ITEM                 | P/N        |
| GENERAL TOLERANCES UNLESS OTHERWISE SPECIFIED ON THIS DRAWING |      | DRAWN                | A. HONG    |
| SURFACES  |      | CHECKED              | A. HONG    |
| TRIM EDGES  |      | ENGINEER             | A. HONG    |
| DATE:   |      | 8-SEP-2016           |            |
| TITLE   |      | CELL, FINISHED, VDA  |            |
| SIZE  |      | DR300700-001         |            |
| SCALE:  |      | AS SHOWN             |            |
| SCALE IS FOR REFERENCE ONLY                                   |      | SHEET                |            |
| 1 of 1  |      | REV 02               |            |

| P/N           | RATED CAPACITY          |
|---------------|-------------------------|
| 300700-001-A1 | > 20.0 Ah               |
| 300700-001-A2 | > 19.5 Ah AND < 20.0 Ah |