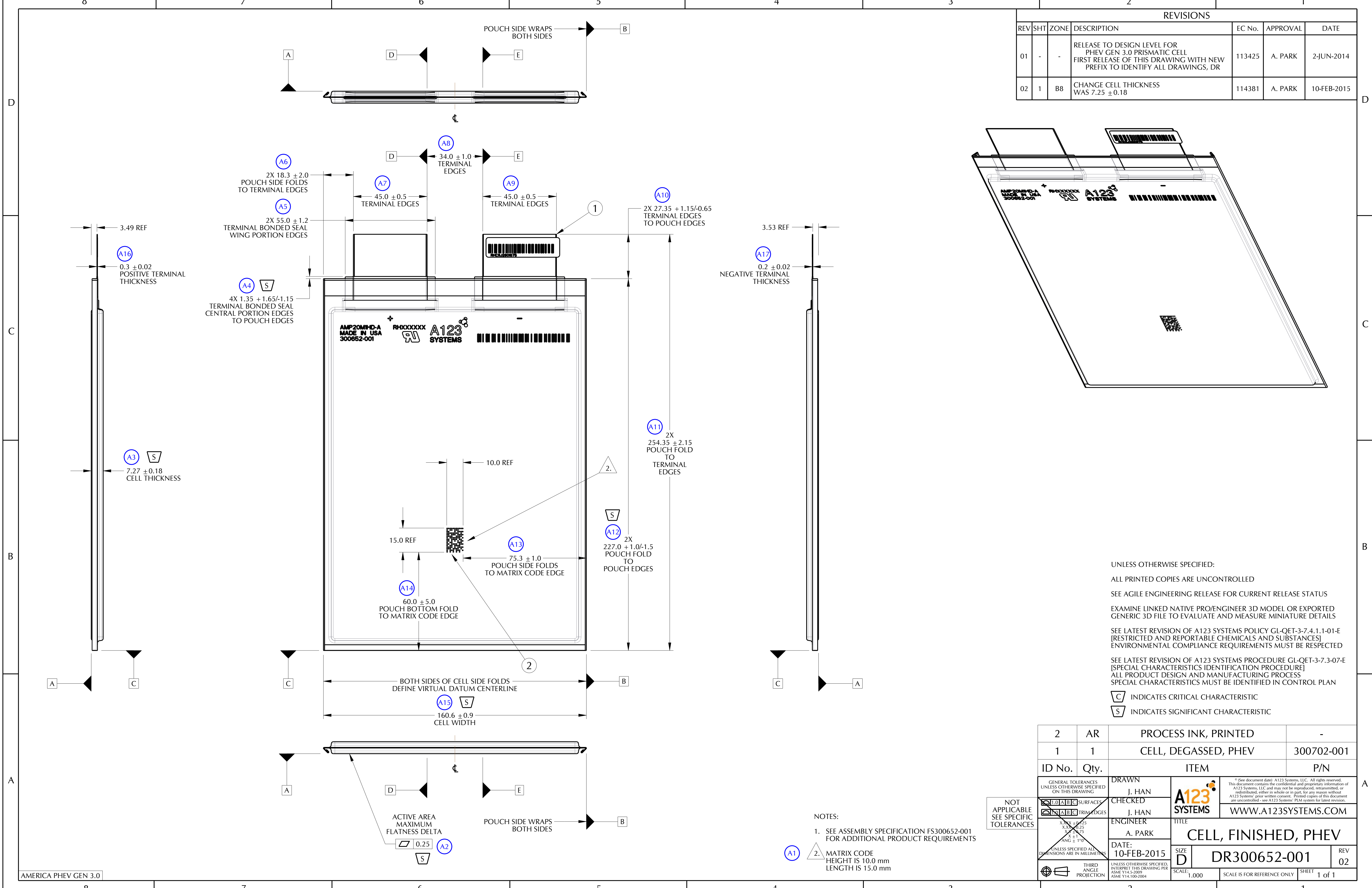


REVISIONS						
REV	SHT	ZONE	DESCRIPTION	EC No.	APPROVAL	DATE
01	-	-	RELEASE TO DESIGN LEVEL FOR PHEV GEN 3.0 PRISMATIC CELL FIRST RELEASE OF THIS DRAWING WITH NEW PREFIX TO IDENTIFY ALL DRAWINGS, DR	113425	A. PARK	2-JUN-2014
02	1	B8	CHANGE CELL THICKNESS WAS 7.25 ± 0.18	114381	A. PARK	10-FEB-2015



UNLESS OTHERWISE SPECIFIED:  
 ALL PRINTED COPIES ARE UNCONTROLLED  
 SEE AGILE ENGINEERING RELEASE FOR CURRENT RELEASE STATUS  
 EXAMINE LINKED NATIVE PRO/ENGINEER 3D MODEL OR EXPORTED GENERIC 3D FILE TO EVALUATE AND MEASURE MINIATURE DETAILS  
 SEE LATEST REVISION OF A123 SYSTEMS POLICY GL-QET-3-7.4.1.1-01-E [RESTRICTED AND REPORTABLE CHEMICALS AND SUBSTANCES] ENVIRONMENTAL COMPLIANCE REQUIREMENTS MUST BE RESPECTED  
 SEE LATEST REVISION OF A123 SYSTEMS PROCEDURE GL-QET-3-7.3-07-E [SPECIAL CHARACTERISTICS IDENTIFICATION PROCEDURE] ALL PRODUCT DESIGN AND MANUFACTURING PROCESS SPECIAL CHARACTERISTICS MUST BE IDENTIFIED IN CONTROL PLAN  
 ▮ INDICATES CRITICAL CHARACTERISTIC  
 ▮ INDICATES SIGNIFICANT CHARACTERISTIC

2	AR	PROCESS INK, PRINTED	-
1	1	CELL, DEGASSED, PHEV	300702-001
ID No.	Qty.	ITEM	P/N
GENERAL TOLERANCES UNLESS OTHERWISE SPECIFIED ON THIS DRAWING		DRAWN	J. HAN
SURFACES		CHECKED	J. HAN
TRIM EDGES		ENGINEER	A. PARK
DATE:		10-FEB-2015	
TITLE		CELL, FINISHED, PHEV	
SIZE		D	
SCALE:		1:1000	
SCALE IS FOR REFERENCE ONLY		SHEET 1 of 1	

NOTES:  
 1. SEE ASSEMBLY SPECIFICATION FS300652-001 FOR ADDITIONAL PRODUCT REQUIREMENTS  
 2. MATRIX CODE HEIGHT IS 10.0 mm LENGTH IS 15.0 mm

NOT APPLICABLE SEE SPECIFIC TOLERANCES